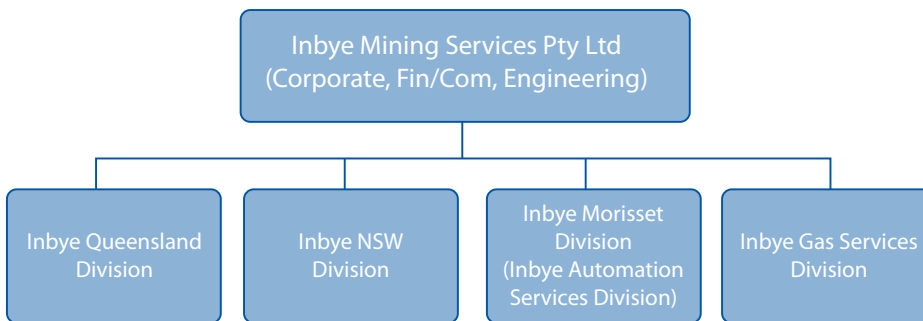


## COMPANY CAPABILITY

### COMPANY OUTLINE

Nepean Longwall (formerly Inbye Mining Services) is an Australian company supplying capital equipment and services to the underground coal mining industry. The supply and support of longwall mining systems and equipment is the primary focus of Nepean Longwall.



Nepean Longwall's corporate headquarters is located in Rutherford, NSW at the gateway to the Hunter Valley coalfield. This purpose built facility is the centre for Nepean Longwall's Original Equipment Design and Manufacturing Operations, as well as providing comprehensive after sales service and support to its NSW customers.

The newly formed Nepean Longwall Automation Division is located in Morisset near Lake Macquarie. Nepean Longwall engineers support and service intrinsically safe and electro hydraulic equipment from our approved workshop facility for use in underground coalmines.

Nepean Longwall operates out of a modern, specially equipped workshop facility in Paget, Mackay. Our Queensland customers are provided with after sales service and support from this site adjacent the coalfields of the Bowen Basin.

Nepean Longwall combines Australian based expertise and experience with global technologies to offer its clients the complete suite of underground longwall mining products and services.

The company launched in 1998 and combined the skills and experience of respected mining professionals to provide the industry with engineering services, equipment supply and support.

Nepean Longwall has continued to build its capability, resources and reputation in becoming a global player in the supply of underground coal mining equipment (predominantly longwall technology) and professional services. Economic and technical strength has grown exponentially over the past 10 years and the result is our recognised ability to design, manufacture, install and service complete longwall mining systems.

Inbye Mining Services is now part of the Nepean Group and is strategically aligned with ZKM Kopex Group.



**Nepean Longwall**  
ABN 94 081 123 211

**Nepean Longwall  
New South Wales**  
64 Gardiner Street  
Rutherford NSW 2320  
T: +61 (0)2 4932 8944  
Fx +61 (0)2 4932 8536

**Nepean Longwall  
Queensland**  
55-57 Southgate Drive  
Paget QLD 4740  
T: +61 (0)7 4952 3844  
Fx: +61 (0)7 4952 1788

**Nepean Longwall  
Automation**  
Gateway Business Park,  
2/ 15 Advantage Avenue  
Morisset NSW 2264  
T: +61 (0)2 4973 6466  
Fx: +61 (0)2 4973 6499

**Nepean Longwall  
Gas Services**  
64 Gardiner Street  
Rutherford NSW 2320  
T: +61 (0)2 4932 8944  
Fx +61 (0)2 4932 8536

**Nepean Longwall  
Technical Department**  
226a High Street  
Maitland NSW 2320  
T: +61 (0)2 4932 8944  
Fx +61 (0)2 4932 8536



## COMPANY CAPABILITY

### STRATEGIC ALLIANCES & PARTNERS

Strategic alliances and partnerships have not only added to the financial strength of Nepean Longwall, but have also provided access to specialist engineering and manufacturing expertise which has greatly extended the suite of specialist products and services Nepean Longwall can offer.

**Tagor**  
[www.tagor.com.pl](http://www.tagor.com.pl)



As part of the ZZM Kopex Group, Tagor is a roof support manufacturer with an outstanding track record of design competence and manufacturing quality. Its manufacturing and fabrication expertise and facilities exceed that of its competitors and its unique and proven stainless steel hydraulic cylinder coating system DURACHROM is a world leading technology offering substantial benefits over the more commonly used electroplated solutions.

**Nepean Group**  
[www.nepeangroup.com.au](http://www.nepeangroup.com.au)



Inbye has at its disposal all the assets, products and expertise and capability of Nepean Engineering, a large heavy fabrication and engineering production facility equipped with the latest machine tools and state of the art manufacturing equipment.

**Tiefenbach**  
[www.tiefenbach-controlsystems.com](http://www.tiefenbach-controlsystems.com)

Tiefenbach Control Systems GMBH is an acknowledged market leader with unrivalled capabilities in the supply of specialist electro hydraulic control systems for applications in mining industry and in the offshore area. Nepean Longwall and Tiefenbach combine to ensure that the hydraulic valves and electro hydraulic control systems supplied as part of Nepean Longwall's longwall systems offer unsurpassed quality, capability and reliability.

**Kettenwerk Becker Prünfte GmbH (KBP)**  
[www.becker-pruente.de](http://www.becker-pruente.de)

Nepean Longwall recognises the superior quality of Becker-Prünfte longwall chain and flightbar products, which have proven themselves in some of the most productive longwall mines all over the world. Special patented designs meticulous quality assurance systems and a state of the art production facility ensure all KBP products are second to none.



**Nepean Longwall**  
 ABN 94 081 123 211

**Nepean Longwall  
 New South Wales**  
 64 Gardiner Street  
 Rutherford NSW 2320  
 T: +61 (0)2 4932 8944  
 Fx +61 (0)2 4932 8536

**Nepean Longwall  
 Queensland**  
 55-57 Southgate Drive  
 Pagent QLD 4740  
 T: +61 (0)7 4952 3844  
 Fx: +61 (0)7 4952 1788

**Nepean Longwall  
 Automation**  
 Gateway Business Park,  
 2/ 15 Advantage Avenue  
 Morisset NSW 2264  
 T: +61 (0)2 4973 6466  
 Fx: +61 (0)2 4973 6499

**Nepean Longwall  
 Gas Services**  
 64 Gardiner Street  
 Rutherford NSW 2320  
 T: +61 (0)2 4932 8944  
 Fx +61 (0)2 4932 8536

**Nepean Longwall  
 Technical Department**  
 226a High Street  
 Maitland NSW 2320  
 T: +61 (0)2 4932 8944  
 Fx +61 (0)2 4932 8536



## COMPANY CAPABILITY

### Preinfalk

[www.preinfalk.de](http://www.preinfalk.de)

Nepean Longwall is the exclusive distributor of the full range Preinfalk specialist gearboxes to the Australian mining industry. These high quality gearboxes demonstrate meticulous attention to systems detail and form an integral part of Inbye's longwall coal clearance products.

### M.I.Power & Electronics

[www.mipower.com.au](http://www.mipower.com.au)

Nepean Longwall accesses leading global technology in electrical systems for the Inbye complete Longwall mining system package from M.I.Power another member of the Nepean Group of companies.

### Eickhoff

[www.eickhoff-bochum.de](http://www.eickhoff-bochum.de)

Nepean Longwall have a longstanding cooperation agreement with Eickhoff, which has seen the companies work closely together in the past and enables us to provide the Eickhoff Shearer as part of Nepean Longwall Complete Longwall Package.

## PRODUCTS

The Nepean Longwall Complete Longwall Mining System is innovative, efficient and designed to meet the unique needs of each customer. Working in close collaboration with its strategic partners, Nepean Longwall can design and supply a high performance Complete Longwall Mining System that rivals the best in the world.

### Longwall Roof Supports

The core of the Nepean Longwall roof support is the structural design, and hydraulic cylinders manufactured by Tagor S.A. Poland, a roof support manufacturer with an outstanding track record of design competence and manufacturing quality.

Complementing the Tagor roof support is an electro-hydraulic control system provided by Tiefenbach Control Systems of Germany. This market proven combination of equipment features a high performance longwall roof support system that complies with the latest technical specification and performance requirements.



### Nepean Longwall

ABN 94 081 123 211

### Nepean Longwall New South Wales

64 Gardiner Street  
Rutherford NSW 2320  
T: +61 (0)2 4932 8944  
Fx +61 (0)2 4932 8536

### Nepean Longwall Queensland

55-57 Southgate Drive  
Pagent QLD 4740  
T: +61 (0)7 4952 3844  
Fx: +61 (0)7 4952 1788

### Nepean Longwall Automation

Gateway Business Park,  
2/ 15 Advantage Avenue  
Morisset NSW 2264  
T: +61 (0)2 4973 6466  
Fx: +61 (0)2 4973 6499

### Nepean Longwall Gas Services

64 Gardiner Street  
Rutherford NSW 2320  
T: +61 (0)2 4932 8944  
Fx +61 (0)2 4932 8536

### Nepean Longwall Technical Department

226a High Street  
Maitland NSW 2320  
T: +61 (0)2 4932 8944  
Fx +61 (0)2 4932 8536



## COMPANY CAPABILITY

### Longwall Coal Clearance Products

Nepean Longwall designs, manufactures and supports a complete range of longwall Coal Clearance equipment. The Nepean Longwall Coal Clearance system draws on many years of design and manufacturing experience enabling Nepean Longwall to offer a wide range of designs tailored for individual mining conditions. Nepean Longwall is unique in producing an Australian designed, engineered and manufactured coal clearance equipment. Nepean Longwall designers have incorporated many unique features in to the longwall products, which greatly enhance the operating ability and improve the maintainability of the longwall systems supplied by Nepean Longwall.

Nepean Longwall designs and manufactures the following specialist longwall equipment:

1. Armoured Face Conveyors (AFC) (with up to 3000kW installed power and operating lengths of up to 400m)
2. Stage Loader Systems (BSL) to complement new and existing AFC systems
3. Longwall crushers
4. Longwall Belt Bootends
5. Longwall Chain and Flights (to fit most current Australian AFC and BSL installations)
6. Longwall sprockets (to fit most current Australian AFC installations)

### Coal Mine Surface Methane Plants

Methane is recognized as the main ingredient of natural gas, a non-renewable fossil fuel formed from the remains of tiny sea animals and plants that died 200-400 million years ago.

Nepean Longwall designs and supplies Free Flow Methane Drainage and Gas Engine Powered Methane Drainage Installations. Nepean Longwall designs and manufactures many different types of methane gas plants to the requirements of the client's specification, and manages all aspects of the site preparation, installation, commissioning and decommissioning as well as rehabilitation of the site.

The management of coalmine methane gas can yield valuable energy contributions for the potential use of the mine site, or sale of power into electricity grids. The control of coalmine methane gas in longwall mines is critical to facilitate mining without gas levels exceeding safe limits.

There are two main styles of gas drainage plants that Nepean Longwall supplies, the "free flow plant", that essentially vents methane to atmosphere, and the "Gas Engine Plant" which burns the methane in a suitably specified gas engine, and uses the power generated to run gaswell extraction fans as well as ancillary services.

Nepean Longwall is also developing a surface based methane destruction furnace that is able to utilize the waste heat energy to provide a range of useful by-products. The furnace is able to guarantee the complete destruction of variable quantities and mixtures of gas by specially designed input control technology. This type of installation is aimed specifically at the destruction of the variable quality and quantities of goaf gases produced by longwall mines.



**Nepean Longwall**  
ABN 94 081 123 211

**Nepean Longwall  
New South Wales**  
64 Gardiner Street  
Rutherford NSW 2320  
T: +61 (0)2 4932 8944  
Fx +61 (0)2 4932 8536

**Nepean Longwall  
Queensland**  
55-57 Southgate Drive  
Paget QLD 4740  
T: +61 (0)7 4952 3844  
Fx: +61 (0)7 4952 1788

**Nepean Longwall  
Automation**  
Gateway Business Park,  
2/ 15 Advantage Avenue  
Morisset NSW 2264  
T: +61 (0)2 4973 6466  
Fx: +61 (0)2 4973 6499

**Nepean Longwall  
Gas Services**  
64 Gardiner Street  
Rutherford NSW 2320  
T: +61 (0)2 4932 8944  
Fx +61 (0)2 4932 8536

**Nepean Longwall  
Technical Department**  
226a High Street  
Maitland NSW 2320  
T: +61 (0)2 4932 8944  
Fx +61 (0)2 4932 8536



## COMPANY CAPABILITY

### SERVICES

#### Repair & Overhaul

Nepean Longwall provides quality overhaul services for all longwall equipment regardless of which company supplied the original equipment. Our workshop facilities in NSW & Queensland are focused on handling and overhauling these heavy-duty products and our experienced staff ensures that equipment is repaired to exacting standards that ensure ongoing equipment longevity.

During overhaul, customers frequently have requirements for modifying their equipment based on operational imperatives. Nepean Longwall can assist you with the execution of these improvements and provide the engineering support to ensure the equipment achieves safe and reliable operation.

#### Project Management

Nepean Longwall has a proven track record in project managing every aspect of the design, manufacture, installation, commissioning, monitoring, repair and overhaul of longwall mining equipment and systems including:

1. Complete longwall mining systems
2. Complete spare parts support and service
3. Complete longwall equipment upgrade, repair and overhaul services
4. Roof support systems
5. Armoured face conveyor systems and components
6. Beam stage loader systems and components
7. Longwall Crushers
8. Longwall and belt conveyor gearboxes
9. Longwall mining chains and connectors
10. Longwall AFC Flight bars
11. Equipment management and Service.
12. Maintenance and inspections

#### Replacement Parts Program

We maintain an efficient program for replacement parts. As well as keeping an inventory of parts, we design and manufacture special "fit for purpose" components.



**Nepean Longwall**  
ABN 94 081 123 211

**Nepean Longwall  
New South Wales**  
64 Gardiner Street  
Rutherford NSW 2320  
T: +61 (0)2 4932 8944  
Fx +61 (0)2 4932 8536

**Nepean Longwall  
Queensland**  
55-57 Southgate Drive  
Pagent QLD 4740  
T: +61 (0)7 4952 3844  
Fx: +61 (0)7 4952 1788

**Nepean Longwall  
Automation**  
Gateway Business Park,  
2/ 15 Advantage Avenue  
Morisset NSW 2264  
T: +61 (0)2 4973 6466  
Fx: +61 (0)2 4973 6499

**Nepean Longwall  
Gas Services**  
64 Gardiner Street  
Rutherford NSW 2320  
T: +61 (0)2 4932 8944  
Fx +61 (0)2 4932 8536

**Nepean Longwall  
Technical Department**  
226a High Street  
Maitland NSW 2320  
T: +61 (0)2 4932 8944  
Fx +61 (0)2 4932 8536

